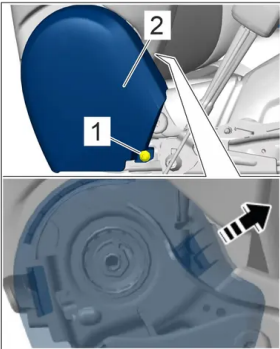


RM, 721619 Removing and installing front seat trim panel

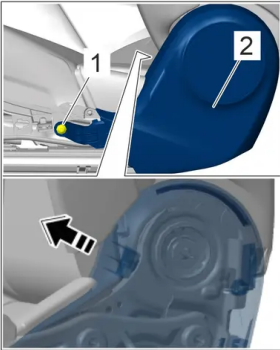
Technical values

Location	Description	Type	Basic value	Lower tolerance	Upper tolerance
Screw securing inner front seat trim panel to seat	Item 1	Tightening torque	2.2 (1.6 ftlb.) Nm		



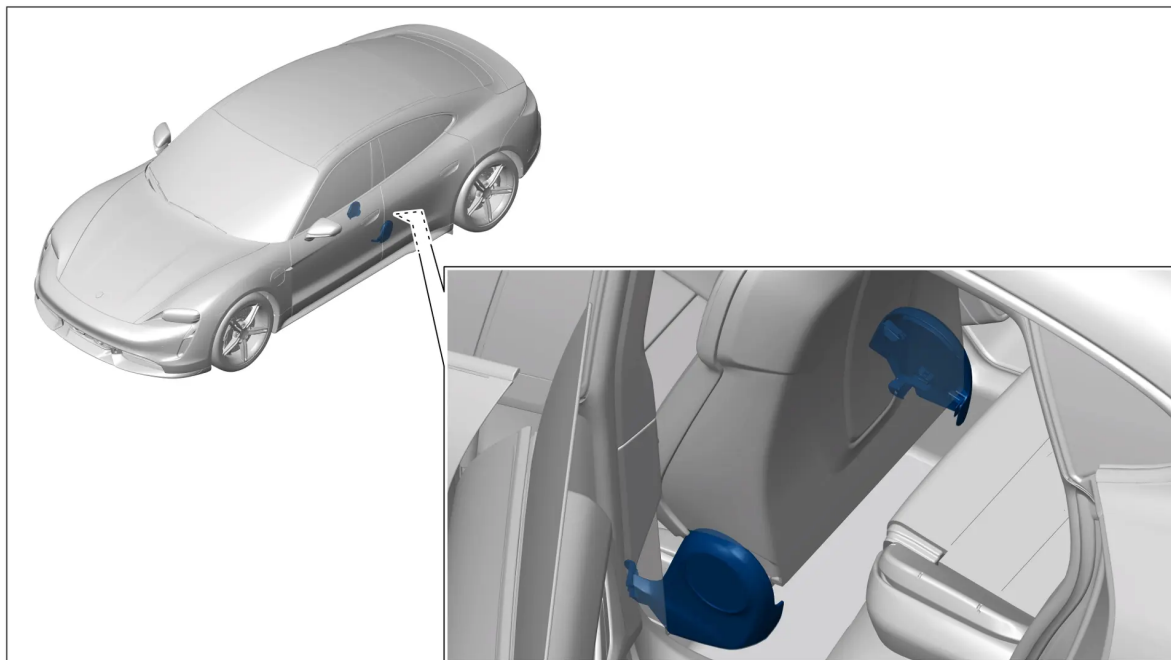
Screw

Screw securing outer front seat trim panel to seat	Item 1	Tightening torque	2.2 (1.6 ftlb.) Nm		
--	--------	-------------------	--------------------	--	--



Screw

Installation position



Installation position

Preliminary work

- 1 Remove front seat.

720119 Removing and installing front seat

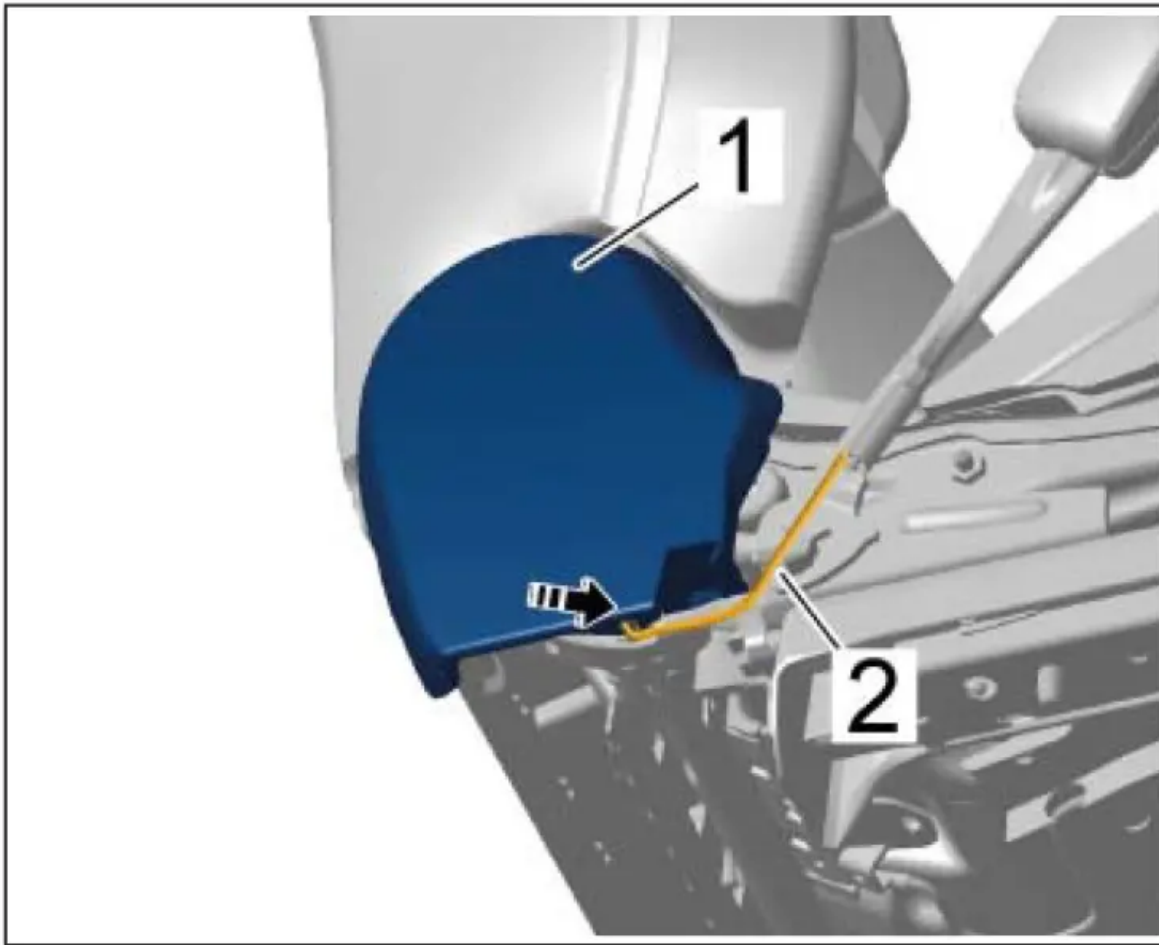
- 2 Remove control panel trim.

721619 Removing and installing control panel trim

Removing front seat trim panel

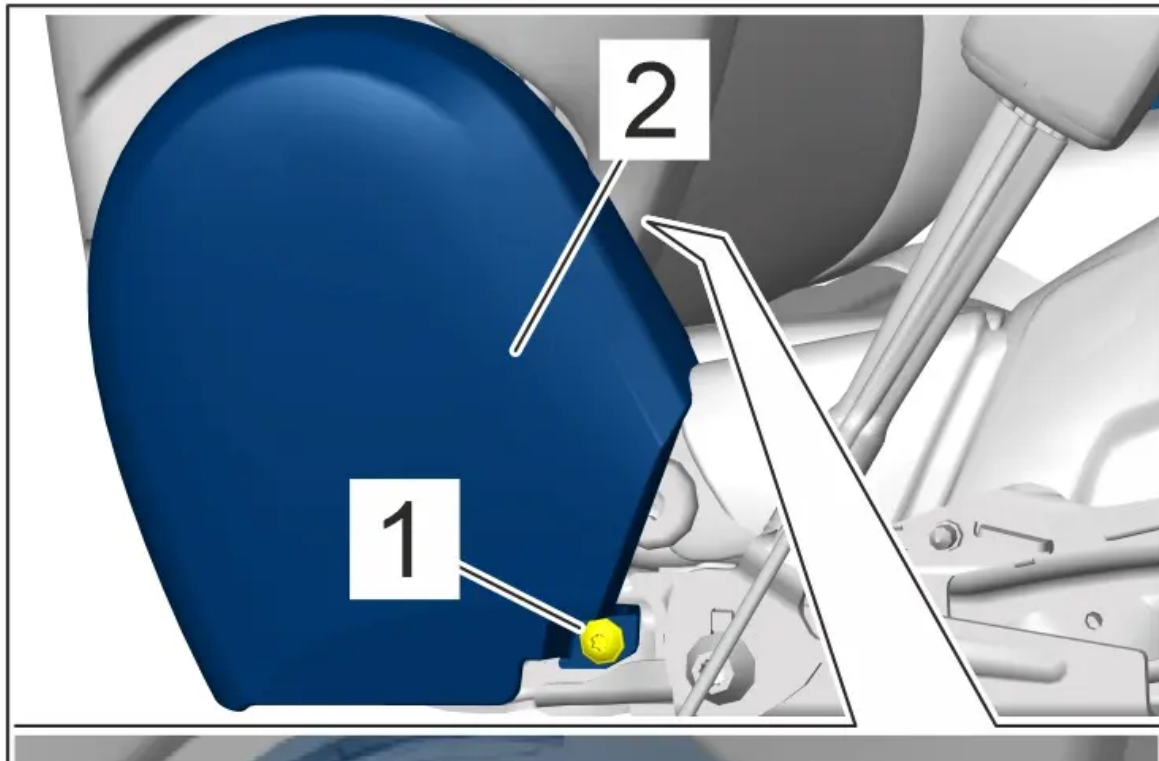
Removing front seat trim panel (inner)

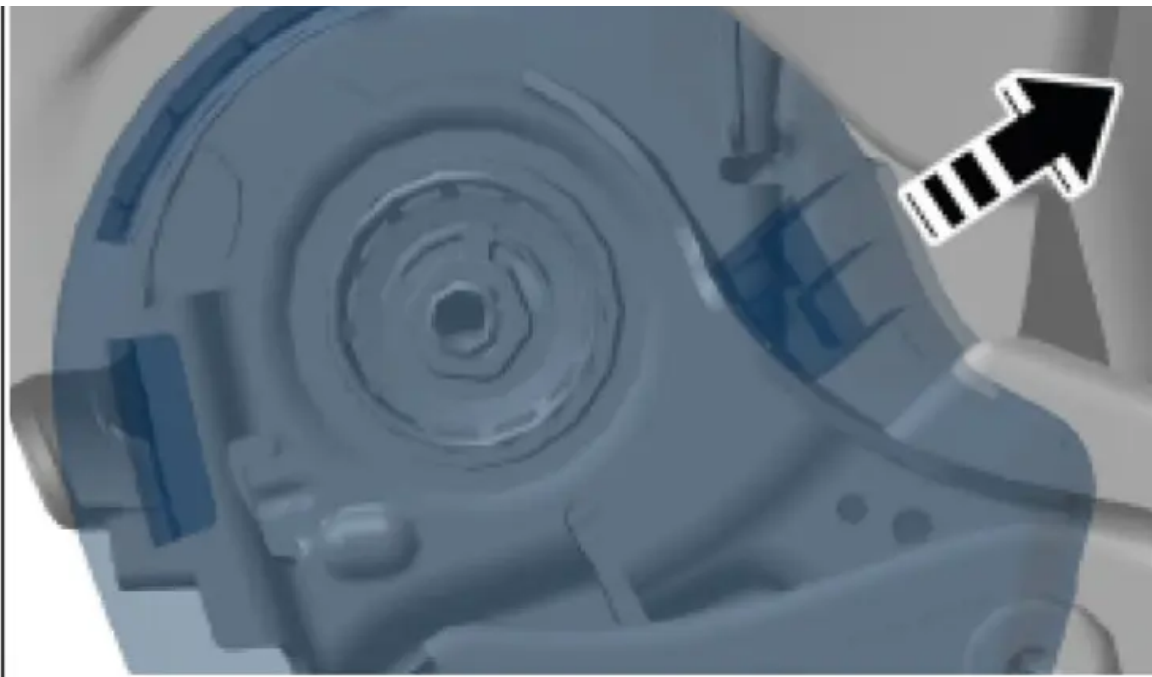
- 1 Disengage electric line for seat-belt buckle -2- from the front seat trim panel (inner) -1- (-arrow-).



Electric line

2 Unscrew screw 1 and detach trim panel for front seat (inner) 2 (-arrow-).

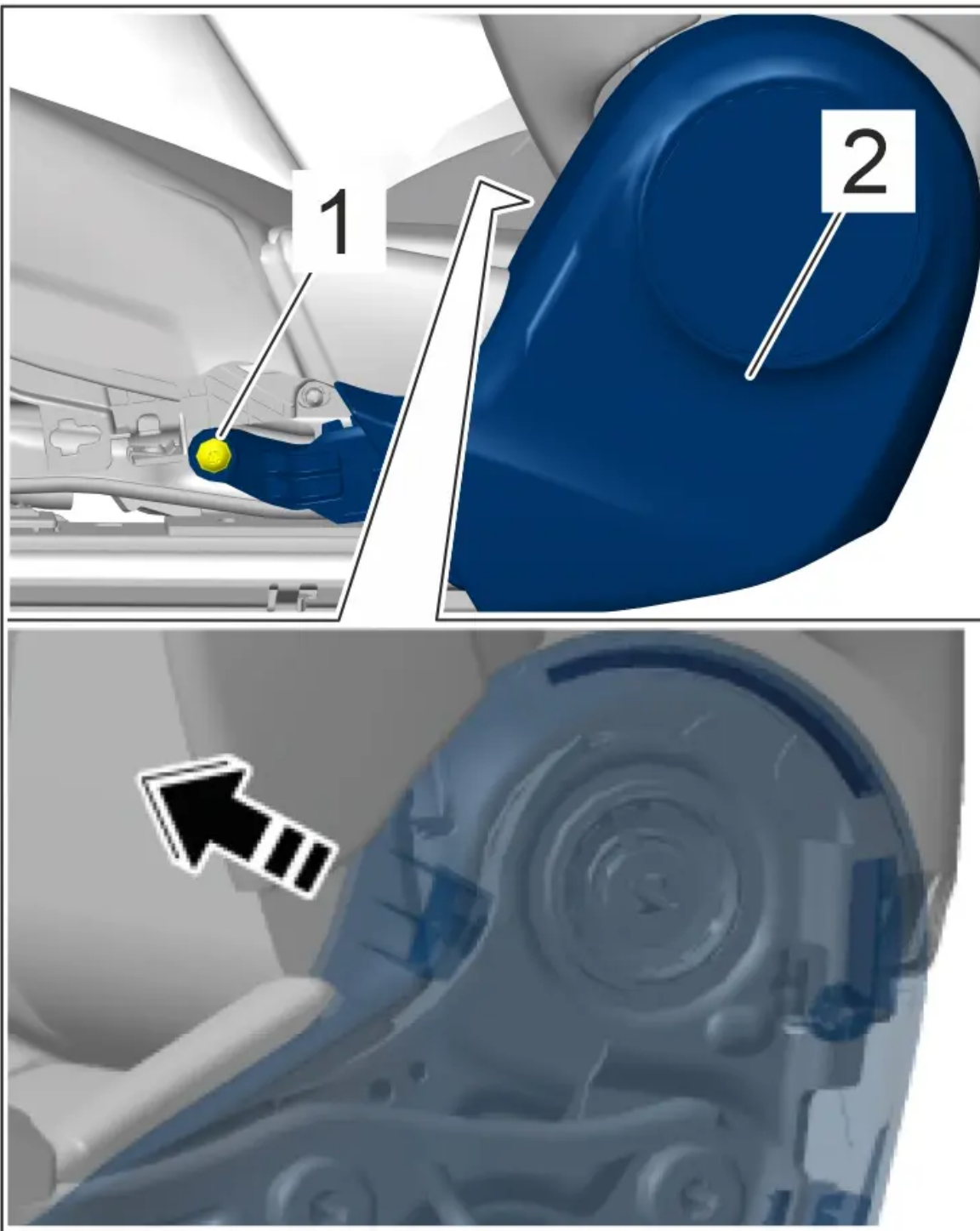




Screw

Removing front seat trim panel (outer)

- 1 Unscrew screw -1- and detach trim panel for front seat (outer) -2- (-arrow-).



Screw

Installing front seat trim panel

Installing front seat trim panel (inner)

1 Installation is performed in reverse order. Pay particular attention to the following:

Tighten screw to ➤ Tightening torque 2.2 (1.6 ftlb.) Nm

Installing front seat trim panel (outer)

1 Installation is performed in reverse order. Pay particular attention to the following:

Tighten screw to ➤ Tightening torque 2.2 (1.6 ftlb.) Nm

Subsequent work

- 1 Install control panel trim.

721619 Removing and installing control panel trim

- 2 Install front seat.

720119 Removing and installing front seat